

## SWITCHING POWER SUPPLY DIRECTION

MODEL	AC INPUT	DC OUTPUT								SSR	CE	CUL	RoHS (OPTION)	R/G LED	FAN	REMARK
		+5V	+8V	+12V	+24V	+48V	-5V	-12V								
P02BSR	95 - 260V	8		2.5						•						
P03C	110 / 220V	15		2.5			1									
P03CM	110 / 220V	15		2.5			1									METER
P15C1	110 / 220V	15		4			1			•		•	•			
P15CA1	110 / 220V	9		4	1.5					•		•	•			
P15CF	110 / 220V	20		5			2			•		•	•	•		
P15CF1	110 / 220V	15		4				1				•				
P15CG2	110 / 220V	15		8	5					•		•	•			
P15CG3	110 / 220V	15		8	5							•	•	•		
P15D	110 / 220V	4		2	2	1.8				•		•				
P16CA	110 / 220V	15(8)		2.5(6)			1					•				
P16CASR	110 / 220V	15(8)		2.5(6)			1			•		•				
P2031X	110 / 220V	25		10			0.5	0.5		•		•		•		BREAK
P2040	110 / 220V	0.5-12		6	6	6						•	•	•		
P2050	110 / 220V	0.5-12		1-12	1-6		1					•	•	•		
P2050C	230V	0.5-8		1-12	1-6							•	•	•		
P2051B	110 / 220V	0.5-12(8)		1-10(12)	1-6			1				•	•	•		
P2060G-4	100 - 240V	0.5-12		6	6	6						•	•	•		PFC
P2060G-5	100 - 240V	0.5-12(8)		1-10(12)	1-6							•	•	•		PFC
P266X	110 / 220V			11.5						•		•				
P267X	110 / 220V				6.5					•		•				
P268X	110 / 220V	15		4	4					•		•		•		
PSA9R1	110V	9	0.5	2.5						•						
PSA9BR	95 - 260V	9	0.5	2.5						•						
P2088G	100 - 240V			2	2							•				
P2180G	100 - 240V			5	5							•				PFC
P2302G	100 - 240V	4		9	5.5					•		•				PFC

## EMI FILTER DIRECTION

MODEL	AC INPUT	CURRENT RATED	EMI FILTER	SAFETY	RoHS
PF06G	100-240VAC	6A	•	CE	•

# POWER SUPPLY



## P02 SERIES

- Mechanism Dimension (LxWxH) : 152 x 107 x 40 (mm)
- Carton Dimension (LxWxH) : 340 x 310 x 270 (mm)
- Weight : 440g / Piece  
11.67KGS (GW) / 24PCS / Carton

### P02 SERIES OUTPUT VOLTAGE AND CURRENT

MODEL	WATT	+5V	+12V	VAC	SSR
P02BSR	40	8	2.5	95~260	•



## PSA SERIES

- Mechanism Dimension (LxWxH) : 178 x 158 x 46 (mm)
- Carton Dimension (LxWxH) : 415 x 415 x 410 (mm)
- Weight : 600g / Piece  
15.0KGS (GW) / 24PCS / Carton

### PSA SERIES OUTPUT VOLTAGE AND CURRENT

MODEL	WATT	+5V	+8V	+12V	VAC	SSR
PSA9R1	45	9	0.5	2.5	110	•
PSA9BR	45	9	0.5	2.5	95~260	•

## TWO-THREE OUTPUTS WITH MAXIMUM POWER FROM 40 TO 45 WATT DEPENDING ON THE MODEL

- Low cost, high reliability.
- High efficiency.
- Over voltage protection.
- Over current protection.
- Low ripple noise at full loading.
- Low working temperature.
- With SSR to support and hopper control.

Input Voltage	100-120VAC, 95-260VAC
Input Frequency	47 - 63Hz
Input Current	0.6A~1.8A
Inrush Current	20A
Efficiency	75%
Load Variation	3%
Noise And Ripple	50mV MAX
Operation Temperature	0-50°C
Electronically Isolated	Input-Output AC 3000V 1 Minute

# POWER SUPPLY

## P26 SERIES

- Mechanism Dimension (LxWxH) : 195 x 110.5 x 43(mm)
- Carton Dimension (LxWxH) : 515 x 460 x 270 (mm)
- Weight : 920g (P268), 770g (Other) / Piece
- 23.8KGS (P268), 19.28KGS (Other) / 24PCS / Carton



### P26 SERIES OUTPUT VOLTAGE AND CURRENT

MODEL	WATT	+5V	+12V	+24V	-12V	VAC	CE	RoHS (option)	FAN
P266 (CE)	140		11.5			110/220	•	•	
P267 (CE)	160			6.5		110/220	•	•	
P268 (CE)	220	15	4	4		110/220	•	•	•

### THREE OUTPUTS WITH MAXIMUM POWER FROM 110 TO 220 WATT DEPENDING ON THE MODEL

- Low cost, high reliability.
- High efficiency.
- Over voltage protection.
- Over current protection.
- Low ripple noise at full loading.
- Low working temperature.

Input Voltage	100-120 / 220-240VAC
Input Frequency	47-63Hz
Input Current	2.4~5A / 1.2~2.8A
Inrush Current	40A
Efficiency	75%
Load Variation	3% MAX (+5V) 10% MAX (Other)
Noise And Ripple	80mV MAX (+5V) 150mV MAX (Other)
Operation Temperature	0-50°C
Electronically Isolated	Input-Output AC 3000V 1 Minute

## P16 SERIES

- With SSR to support and hopper control
- Mechanism Dimension (LxWxH) : 188 x 98 x 38(mm)
- Carton Dimension (LxWxH) : 450 x 380 x 220 (mm)
- Weight : 620g / Piece  
16.0KGS (GW) / 24PCS / Carton



### P16 SERIES OUTPUT VOLTAGE AND CURRENT

MODEL	WATT	+5V	+12V	-5V	VAC	SSR	RoHS (option)
P16CA	110	15(8)	2.5(6)	1	110/220		•
P16CASR	110	15(8)	2.5(6)	1	110/220	•	•

### ONE-THREE OUTPUTS WITH MAXIMUM POWER FROM 100 TO 110 WATT DEPENDING ON THE MODEL

- Low cost, high reliability.
- High efficiency.
- Over voltage protection.
- Over current protection.
- Low ripple noise at full loading.
- Low working temperature.

Input Voltage	100-120 / 220-240VAC
Input Frequency	47-63Hz
Input Current	2.8 / 1.4A
Inrush Current	40A
Efficiency	75%
Load Variation	2% MAX (+5V)
Noise And Ripple	50mV
Operation Temperature	0-50°C
Electronically Isolated	Input-Output AC 3000V 1 Minute

# POWER SUPPLY



## P03 SERIES

- Mechanism Dimension(LxWxH) : 184 x 130 x 54 (mm)
- Carton Dimension (LxWxH) : 410 x 400 x 295 (mm)
- Weight : 680g / Piece
- 17.32KGS (GW) / 24PCS / Carton

### P03 SERIES OUTPUT VOLTAGE AND CURRENT

MODEL	WATT	+5V	+12V	-5V	VAC	REMARK
P03C	110	15	2.5	1	110/220	
P03CM	110	15	2.5	1	110/220	METER

## P15 SERIES

- Mechanism Dimension(LxWxH) : 188 x 130 x 54(mm)
- Carton Dimension (LxWxH) : 410 x 410 x 305 (mm)
- Weight : 740g (P15D), 670g (Other) / Piece
- 18.8KGS(P15D), 17.0KGS(Other) / 24PCS / Carton



### P15 SERIES OUTPUT VOLTAGE AND CURRENT

MODEL	WATT	+5V	+12V	+24V	+48V	-5V	-12V	VAC	CE	RoHS (Option)	Prog LED	FAN
P15C1	130	15	4			1		110/220	•	•	•	
P15CA1	130	9	4	1.5				110/220	•	•	•	
P15CF1	170	20	5			2		110/220	•	•	•	•
P15CF1	135	15	4				1	110/220			•	
P15CG2	160	15	8	5				110/220	•	•	•	
P15CG3	200	15	8	5				110/220		•	•	•
P15D	180	4	2	2	1.8			110/220	•	•		

### THREE-FOUR OUTPUTS WITH MAXIMUM POWER FROM 110 TO 200 WATT DEPENDING ON THE MODEL

- Low cost, high reliability.
- High efficiency.
- Over voltage protection.
- Over current protection.
- Low ripple noise at full loading.
- Low working temperature.
- Green LED indicator when voltage within +5V~5.3V.
- Red LED indicator when voltage without +5V~5.3V(R / G LED).

Input Voltage	100-120 / 220-240VAC
Input Frequency	47-63Hz
Input Current	2.4~5A / 1.2~2.8A
Inrush Current	40A
Efficiency	75%
Load Variation	2% MAX (+5V) 5% MAX (Other)
Noise And Ripple	25~50mV MAX (+5V) 150mV MAX (Other)
Operation Temperature	0-50°C
Electronically Isolated	Input-Output AC 3000V 1 Minute

# POWER SUPPLY

## P20 SERIES

- Mechanism Dimension(LxWxH) : 156 x 150 x 86(mm)
- Carton Dimension (LxWxH) : 405 x 310 x 370 (mm)
- Weight : 1.32KG (BREAK) / Piece  
17.3KGS (BREAK), 18.5KGS(R/G LED) / 12PCS / Carton



P20 SERIES OUTPUT VOLTAGE AND CURRENT														
MODEL	WATT	+5V	+12V	+24V	+48V	-5V	-12V	VAC	CE	CUL	RoHS (Option)	LED	FAN	REMARK
P2031 (CE)	250	25	10			0.5	0.5	110/220	•		•	•	•	BREAK
P2040	280	0.5-12	6	6	6			110/220			•	•	•	
P2050	280	0.5-12	1-12	1-6			1	110/220			•	•	•	
P2050C	280	0.5-8	1-12	1-6				230			•	•	•	
P2051B	260	0.5-12(8)	1-10(12)	1-6			1	110/220			•	•	•	REAL POWER SOCKET & REMOTE SWITCH

### THREE-FOUR OUTPUTS WITH MAXIMUM POWER FROM 250 TO 280 WATT DEPENDING ON THE MODEL

- Low cost, high reliability.
- High efficiency.
- Over voltage protection.
- Over current protection.
- Low ripple noise at full loading.
- Low working temperature.
- With AC power socket for monitor.
- P2040 / P2050 / P2051B :

\* 2-EMI filter built-in

\* Dual main transformer design for large current O/P.

\* Green LED indicator when voltage within +5V~5.3V.

Red LED indicator when voltage without +5~5.3V (R/G LED).

Input Voltage	100-120 / 220-240VAC
Input Frequency	47-63Hz
Input Current	2.4~6.5A / 1.2~3.5A
Inrush Current	60A
Efficiency	70%
Load Variation	5% MAX (+5V) 5% MAX (Other)
Noise And Ripple	100mV MAX (+5V) 250mV MAX (Other)
Operation Temperature	0-50°C
Electronically Isolated	Input-Output AC 3000V 1 Minute



P2060G-4

P2060G-5

## P2060 SERIES

**NEW**

- Mechanism Dimension(LxWxH) : 156 x 150 x 86(mm)
- Carton Dimension (LxWxH) : 405 x 310 x 370 (mm)
- Weight : 1.28KG / Piece  
16.9KGS / 12PCS / Carton

P2060 SERIES OUTPUT VOLTAGE AND CURRENT													
MODEL	WATT	+5V	+12V	+24V	+48V	VAC	CE	CUL	RoHS	FAN	REMARK	REAL POWER SOCKET & REMOTE SWITCH	
P2060G-4	280	0.5-12	6	6	6	100-240			•	•	PFC	NO	
P2060G-5	260	0.5-12(8)	1-10(12)	1-6		100-240			•	•	PFC	Yes	

### THREE-FOUR OUTPUTS WITH MAXIMUM POWER FROM 260 TO 280 WATT DEPENDING ON THE MODEL

- Active PFC
- High efficiency.
- Over voltage protection.
- Over current protection.
- Low ripple noise at full loading.
- Low working temperature.
- With AC power socket for monitor.

Input Voltage	100-240VAC
Input Frequency	47-63Hz
Input Current	8A MAX
Inrush Current	60A
Efficiency	≥ 80%
Load Variation	5% MAX (+5V) 10% MAX (Other)
Noise And Ripple	100mV MAX (+5V) 250mV MAX (Other)
Operation Temperature	0-50°C
Electronically Isolated	Input-Output AC 3000V 1 Minute



## P2088 SERIES

- Mechanism Dimension(LxWxH) : 140 x 125 x 30(mm)

### P2088 SERIES OUTPUT VOLTAGE AND CURRENT

MODEL	WATT	+12V	+24V	VAC	RoHS
P2088G	72	2	2	100-240	•

DUAL OUTPUT WITH MAXMUM POWER FROM 50 TO 74 WATT DEPENDING ON THE MODEL.

- Universal full range AC input
- High efficiency and reliability
- Over voltage protection
- Over crurent protection
- Low ripple & noise
- Low working temperature
- Open type, for LCD panel

Input Voltage	100-240VAC
Input Frequency	47-63Hz
Input Current	≤ 1.5A
Inrush Current	50Amax
Efficiency	≥ 81%
Load Variation	3%(12V), 5%(24V)max
Noise And Ripple	50mV(12V), 100mV(24V)max
Operation Temperature	0-50°C
Electronically Isolated	Input-Output AC 3000V 1 Min



## P2180 SERIES

- Mechanism Dimension(LxWxH) : 180 x 130 x 33(mm)

### P2180 SERIES OUTPUT VOLTAGE AND CURRENT

MODEL	WATT	+12V	+24V	VAC	RoHS
P2180G	180	5	5	100-240	•

DUAL OUTPUT WITH MAXMUM POWER FROM 75 TO 180 WATT DEPENDING ON THE MODEL.

- Universal full range AC input
- Active PFC, P.F.>0.95
- High efficiency and reliability
- Over voltage protection
- Over crurent protection
- Low ripple & noise
- Low working temperature
- Open type, for LCD panel

Input Voltage	100-240VAC
Input Frequency	47-63Hz
Input Current	≤ 3A
Inrush Current	50Amax
Efficiency	≥ 82%
Load Variation	5%max
Noise And Ripple	120mV(12V), 240mV(24V)max
Operation Temperature	0-50°C
Electronically Isolated	Input-Output AC 3000V 1 Min

# POWER SUPPLY



## P2302 SERIES

- Mechanism Dimension(LxWxH) : 200 x 200 x 40(mm)
- Carton Dimension(LxWxH) : 465 x 465 x 360(mm)
- Weight : 1.07KG / Piece
- 27KGS(GW) / 24PCS / Carton

P2302 SERIES OUTPUT VOLTAGE AND CURRENT							
MODEL	WATT	+5V	+12V	+24V	VAC	CE	RoHS
P2302G	260	4	9	5.5	100-240	•	•

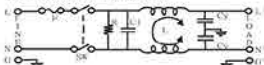
TRIPLE OUTPUT WITH MAXIMUM POWER FROM 200 TO 260 WATT DEPENDING ON THE MODEL.

- Universal full range AC input
- Active PFC, P.F.>0.95
- High efficiency and reliability
- Over voltage protection
- Over current protection
- Low ripple & noise
- Low working temperature

Input Voltage	100-240VAC
Input Frequency	47-63Hz
Input Current	≤4A
Inrush Current	50Amax
Efficiency	≥82%
Load Variation	5%max
Noise And Ripple	150mV(5&12V), 200mV(24V)max
Operation Temperature	0-50°C
Electronically Isolated	Input-Output AC 3000V 1 Min

## PF SERIES

- Electrical Lifetime : 10,000 Cycles
- Leakage Current Is 0.8mA MAX.
- Mechanism Dimension (LxWxH) : 65.1 x 49.6 x 61.9(mm)
- Carton Dimension (LxWxH) : 390 x 390 x 380 (mm)
- Weight : 60.5g / Piece  
11KGS (GW) / 150PCS / Carton
- Electrical Schematic :



PF SERIES					
MODEL	AC INPUT	RATED CURRENT	EMI FILTER	CE	RoHS
PF06G	100-240 VAC	6A	•	•	•

## SPECIFICATION

Rated Voltage	125 / 250VAC
Rated Current	6A
Leak Current	0.8 mA
Test Voltage Line To Line	1450VDC
Test Voltage Line To Ground	2250VDC
Insulation Resistance	100MΩ
Direct Current Resistance	0.5Ω MAX
Temperature Rise	30°C MAX
Operating Temperature	-25 ~ +85°C
Attenuation Normal Mode 25 db Min	1.0 ~ 50MHz
Attenuation Common Mode 25db Min	1.0 ~ 50MHz